

On-Line PDF

<https://genconnexdirect.net/litature.htm>

Step 1 Dis-assembly



#1 Phillips dead screw driver
#2 Phillips head screw driver
flat head screw driver
8mm socket
10mm socket
3/8" socket
pliers or channel locks
microwave oven or boiling water
5/32" Allen head socket or wrench

Before Starting: DRAIN OUT ALL GASOLINE FROM TANK AND FLOAT BOWL AND DISPOSE OF SAFELY

Step 1A - Remove skins



1a-1 Remove choke label (Propane does not use choke).



1a-2 Remove access door.



1a-3 Remove gas cap by removing cotter snap pin.



1a-4/5 Unscrew and tilt out front bezel (4 screws).



1a-6 Remove rear bezel (4 screws).



1a-7/8 Remove two handle screws.



1a-9 Remove lower trim (this side only) by prying off with finger or flat blade screw driver.



1a-10/11 Remove lower skins bolts (2 10mm bolts).



1a-12 Remove screw near pull handle.



1a-13 Gently remove skins.

Step 1B - Remove gas tank & drain lines



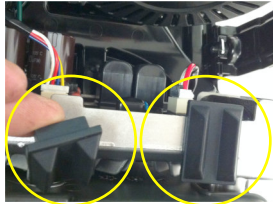
1b-1 Remove fuel line clamp at bottom of gasoline tank **AFTER FULLY DRAINING GASOLINE!**



1b-2 Remove fuel tank by separating plastic frame at very top and gently lifting up on tank. Discard empty tank and lid



1b-3/4 Remove fuel drain & vent tubes (3 tubes) and discard.



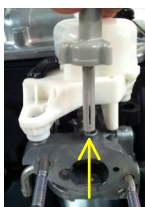
1b-5 Depending on which you have, remove either 2 fuel tank bottom bumpers or entire new rubber cover (not shown) and discard. The 2 bumpers were replaced by Honda with a single cover in their most recent re-call.

Step 1C - Remove air cleaner box



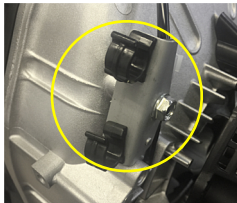
1c-1/2/3/4/5/6 Remove air cleaner unit by first removing outer cover then one inner 8mm hex bolt, vent tube, then two outer 8mm hex nuts then slide off air cleaner assembly. discard 2 8mm nuts

Step 1D - Remove choke



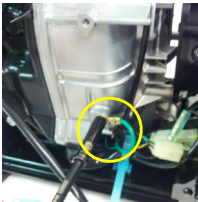
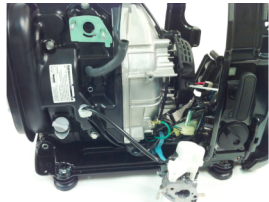
1d-1/2/3 Remove pressed-in choke plate by pulling outward with pliers (use force), then turn handle full right then pulling up. Discard choke plate, handle and felt washer.

Step 1F - Remove gasoline pump & pump hoses



1f-1/2/3/4/5 Remove and discard gas pump & line to carburetor by moving away clamp first. Then pull off tube going to engine vent below carburetor remove gas lines from plastic holders (leave bracket in place for new fuel line). Then remove clamp on pump hose & clamp going down to the on/off switch. Lastly remove two screws holding pump to frame and discard screws and pump assembly.

Step 1G - Remove carburetor & bolts & ground screw



1g-1/2/3 Remove two 8mm long bolts holding carburetor to engine by removing two shorter 8mm flange bolts. Save short bolts, but discard 2 long bolts.

1g-4 Remove ground screw and save.

Step 2 Re-assembly



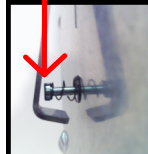
Step 2 Prepare gas module and install Honda gas cap boot over inlet



2a-1 Temporarily remove air purge knob & shaft.

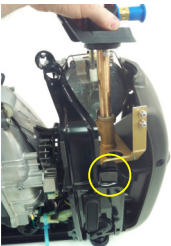


2a-2/3/4 Remove Honda gas boot from old gas tank and install over inlet (heat with hot water or carefully microwave for 15 seconds to softens it) **CAUTION - RUBBER WILL BE HOT WEAR SUITABLE GLOVES.**

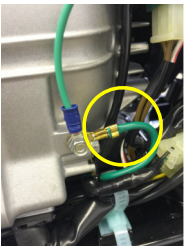


2a-5/6/5 Re-install air purge knob & shaft then adjust for 1/8" (+/- .1/16") clearance between spring button and lever. **DANGER - MAKE SURE THERE IS A GAP or you will have propane leaking when you connect to your BBQ tank!**

Step 2A - Install gas module Into frame



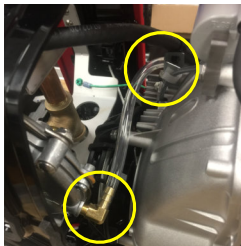
2a-1 Install module from top seating it in both gas tank side holders



2a-2 Install ground strap using previously removed ground screw.

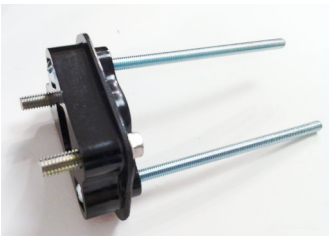


2a-3 Test air purge knob to make sure lever engages spring button and returns into seated position without binding.



2a-4 Route gas module vent tube over the top of the pull starter assembly towards other side of generator.

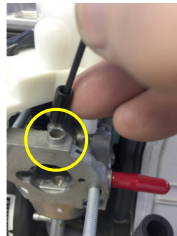
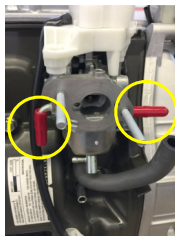
Step 2B - Re-Install carburetor



2b-1/2 Insert new long screws then re-attach block to engine.



2b-3/4 Re-install gasket then slide carburetor back on Make sure servo wire is not tight on left side.

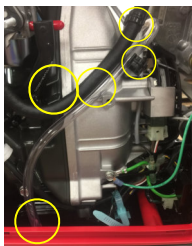


2b-5/6/7 Install red caps on carburetor inlets, small black cap inside choke lever hole, and large black cap over crankcase port.

Step 2C - Install fuel injection module & air cleaner housing



2c-1/2 Slide on the new gasket then slide on the fuel nozzle assembly then slide on the old gasket.



2c-3 Push the fuel line into the upper clamp-in and the clear vent tube into the lower clamp-in bracket. Make sure to route the lower end of the fuel tube under bottom tab just left of air cleaner bolt hole. **Do not** attach fuel hose to nozzle assembly yet.

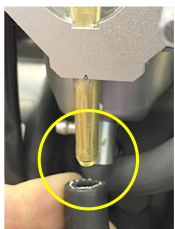
PLEASE NOTE:
IT IS IMPORTANT TO
ROUTE THE HOSES
AS SHOWN SO THE
GAS AND VENT
HOSE DO NOT GET
CRUSHED BEHIND
THE AIR CLEANER
IN THE NEXT STEP.



2c-4/5/6 Place air cleaner 8mm bolt through air cleaner body and add three supplied washers on backside. Hold onto washer and slide air cleaner onto upper two carburetor studs. Gently tighten 8mm bolt, then install and tighten two supplied 3/8" flange nuts to hold carburetor and injector assembly (you may need to hold 4" bolt from turning by gently pressing on side of exposed threads with finger while tightening nut).



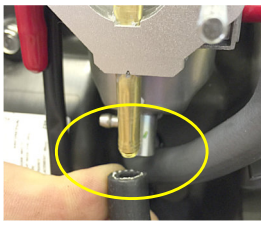
Step 2D - Attach fuel hose and close up air box



2d-1/2/3 Push fuel line all the way onto brass injector, then install air filter element, air filter cover, and then re-install crankcase vent tube.



Step 2E - High Altitude Orifice or natural gas change



2e-1 If a high-altitude kit is needed, change the fuel jet in the end of the fuel tube with the supplied allen head wrench.

Step 2F - Re-Install skins



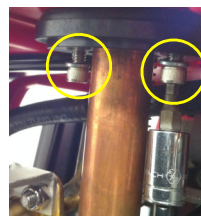
2f-1/2/3/4-install side skins by first installing 'wood' screw above pull starter then install top two screws starting with back end screw.



2f-5/6 install bottom two 10mm long hex bolts starting with back bolt.



2f-7 Re-install trim (snap in place), then install back plastic cover.



2f-8 Gently tighten two nozzle clamp screws from inside but do not deform front edge of red skins or front cover won't fit properly. Install front & rear cover. Also pull up and down primer ball on top to make sure it moves freely. Back off slightly if it starts to bind. Then fasten front cover in place.

Step 2G - Add labels



2g-1/2/3 Attach "Genconnex start" label on door next to pull start and the small "Propane" label below it, the LARGE "Propane" Label on opposite side and a small "Propane" label on the back. Place Emissions label over existing EPA label on engine frame near oil dip stick.

Step 2H - Additional steps

Replace oil with fully synthetic 5W-30 for cold climates or 10W-30 for warmer climates

Read supplied "Owner's Manual Supplement"

WARNING:

Propane is a combustible fuel. It should be kept outdoors at all times, If you suspect a leak in your generator or any hoses / connections, you should immediately turn off the fuel at the tank then test connections with soapy water. Do not attempt to use any components including hoses that have leaks. Replace them immediately.